

Installing a wind turbine at Bodinnick Farm

farmer profile

Oliver Baines from a Cornish Farmer gives us his account of the benefits and challenges involved in installing a wind turbine on his farm.

What is the farm set up?

The farm is a 250 acre organic beef and sheep farm. We grow corn for use on the farm. The local school uses the farm for field studies and we are hoping to extend this into using data from the wind turbine.

How did you come to the decision to install a wind turbine?

We felt the need to contribute to the move to a low carbon future; and to find a new way to diversify the farm operation. Woodland management for fuel and alternative energy production seemed two good paths to follow. It took us two years to agree on the type of renewable to go for and at what scale.

What model have you installed and why?

We installed an Endurance E-3120. We had a look at smaller turbines but felt that they weren't productive enough; and also at larger machines but decided that the financial exposure was too great. We liked the technical aspects of the E-3120 and crucially its appearance.

How was the pre-installation phase? *(For example planning, wind speed studies, public engagement)*

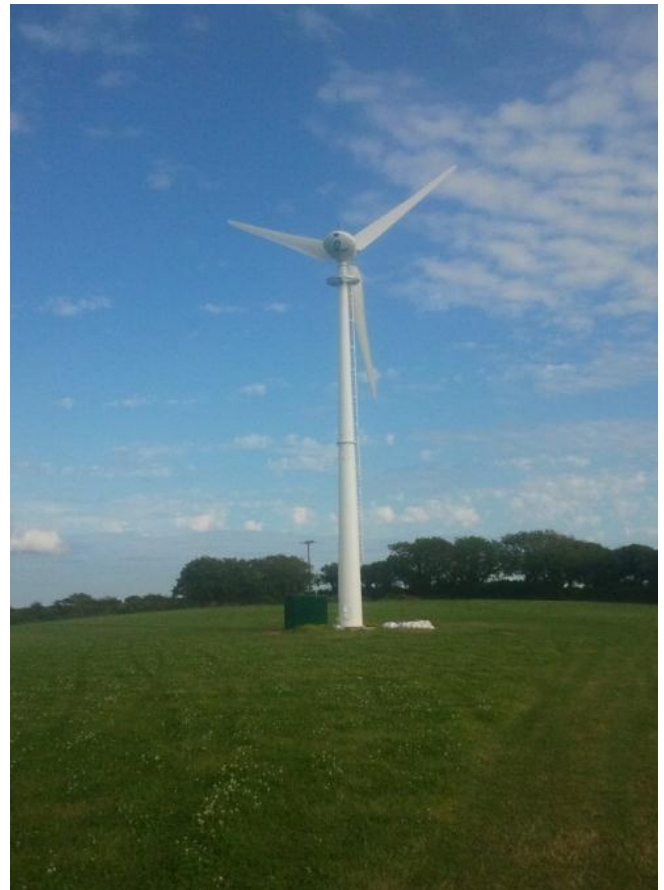
All very straightforward when it came to it. We had an agent to help us through planning and received no objections; in fact the school who we did consult were 100% behind us. Luckily we didn't have to do an Environmental Impact Assessment or a bat survey.

How did you find accessing finance?

Dead easy. We required a loan and the bank fell over itself to offer one especially since it could use the farm as security.

How did you decide where to position it?

We had a choice of 3 good locations. The best was set aside because one of the partners felt it impacted too heavily on a very beautiful part of the farm; the second was felt to be too close to the village and even though it could be connected to the school for their use there was the chance of a complaint that might mean moving the turbine at a later date; so the third option was chosen. In retrospect we believe it was the correct decision.



The Endurance E-3120 on site

How was the installation process?

No problem except for grid access, which seemed to take forever.

Installing a wind turbine at Bodinnick Farm



Have you had any issues since it has been up and running?

No it has been operating really well

Now it's up, would you do anything differently if you were installing again?

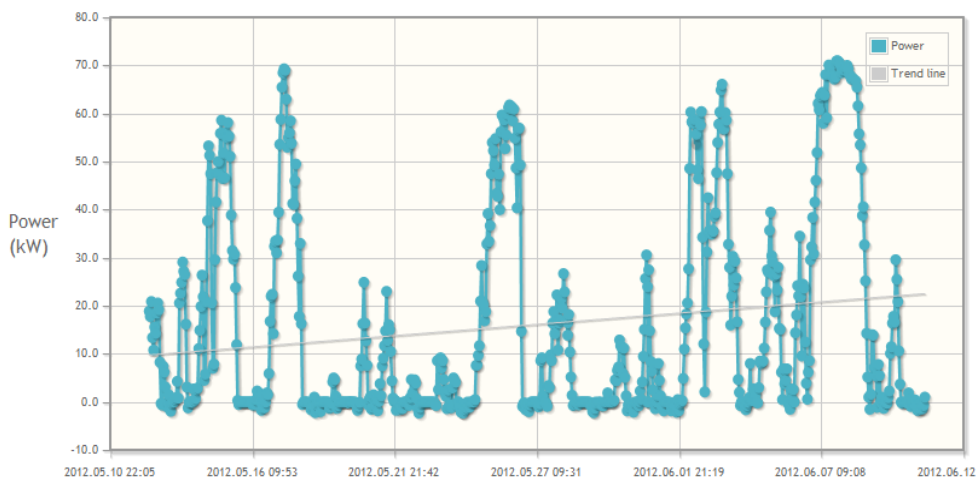
No there isn't anything that we would do differently.

What advice would you give people considering installing?

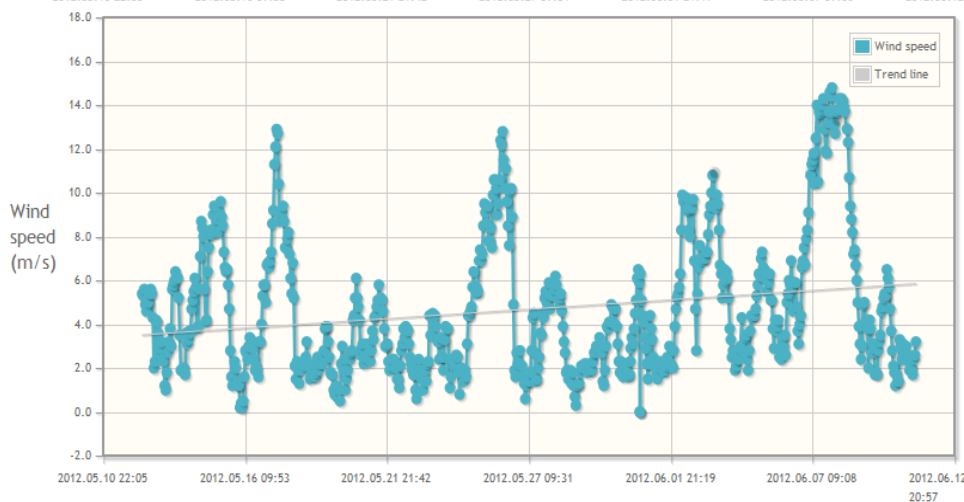
Two points: Never forget how absolutely critical wind speed is (5m extra altitude or height makes all the difference), and confirm and book in your grid connection at the earliest possible opportunity.

How is the wind turbine performing?

The following two plots show the average power (kW) generated and the average wind speed for each hour over the last month (from 11th May to 11th June 2012).



Average power output over one month



Average wind speed output over one month

To view the current performance data for this wind turbine click [here](#).

To read about another farmer who has had a wind turbine installed click [here](#).



European Agricultural Fund for Rural Development: Europe investing in rural areas.

